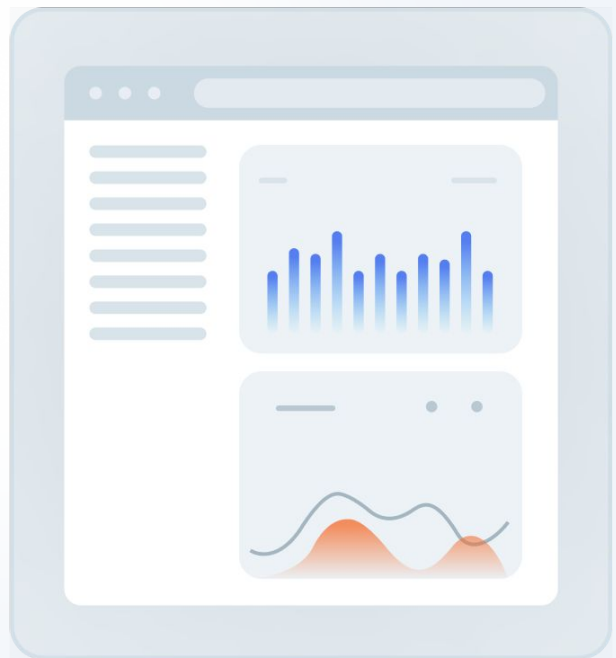
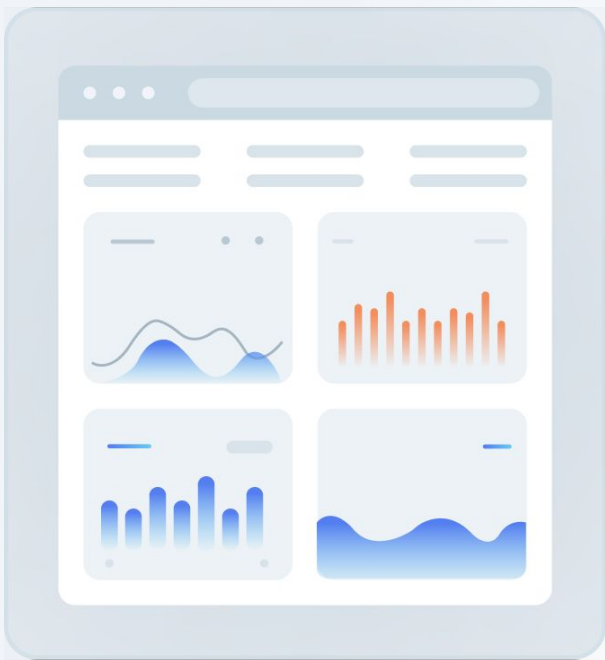




# UI/UX Testing Checklist

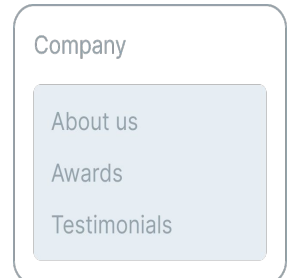


# UI/UX Testing Checklist

## 01 Functional Layer

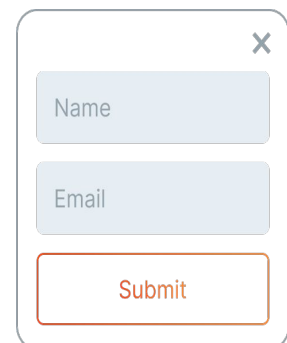
### Navigation and links

- All navigation menus are working correctly
- Internal links lead to the correct pages
- External links open in new tabs/windows
- Back and forward browser buttons work as expected



### Forms and Data Input

- All form fields accept appropriate input
- Required fields are properly validated
- Error messages are displayed for invalid inputs
- Forms submit successfully with valid data
- Auto-fill and auto-complete functions work correctly



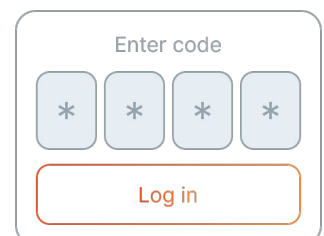
### Search Functionality

- Search returns relevant results
- Search handles misspellings and partial matches
- Advanced search options (if applicable) function correctly



### User Actions

- User registration process works end-to-end
- Login/logout functionality is working
- Password reset process functions correctly
- User profile updates are saved and displayed accurately



#### Charles Proxy

Use Charles Proxy to simulate slow networks and test your app's behavior under poor conditions.

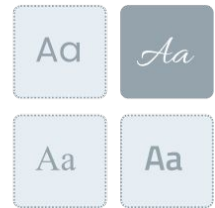
#### Prioritize testing

your most common user journeys first. **88% of online consumers** are less likely to return to a site after a bad experience.

## 02 Visual Layer

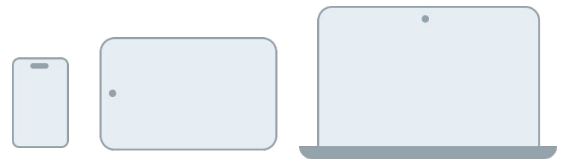
### Design Consistency

- Color scheme is consistent across all pages
- Typography (fonts, sizes, styles) is consistent
- Logos and branding elements are uniform
- Icons and buttons maintain a consistent style



### Responsive Design

- Layout adjusts appropriately for different screen sizes
- Images scale without distortion
- Text remains readable on all devices
- No horizontal scrolling on mobile devices



### Visual Hierarchy

- Important elements stand out visually
- Content is organized in a logical, easy-to-scan manner
- White space is used effectively to separate content



### Cross-Browser Compatibility

- Design renders correctly in all the browsers
- Functionality is consistent across all major browsers



Use Percy or Chromatic for automated visual regression testing. They catch unintended visual changes across your entire UI.



Use Chrome's built-in print preview (Cmd + P) to test **how your UI looks when printed**. Critical for certain applications.



Lambdatest allows you to perform live, interactive testing across 2000+ real browsers and operating systems.

## 03 Performance Layer

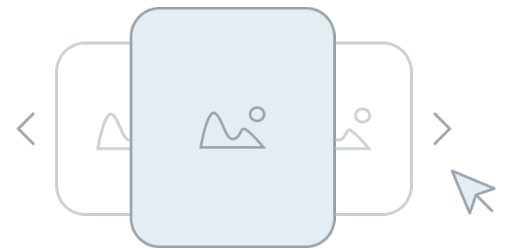
### Load Times

- Home page loads in under 3 seconds
- Other pages load in under 2 seconds
- Images and media are optimized for quick loading



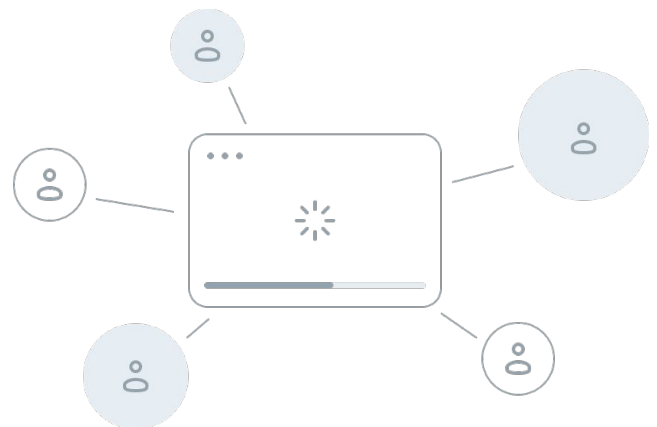
### Responsiveness

- Interactions (clicks, scrolls, hovers) respond immediately
- Animations and transitions are smooth
- No lag when typing in form fields



### Stability

- Application remains stable under heavy user load
- No memory leaks occur during prolonged use
- Application recovers well from interruptions



**A 1-second delay** in page load time can lead to a **7% loss in conversions**.

Optimize images and minify CSS/JavaScript for performance boost.



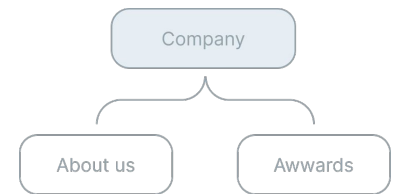
**Unoptimized fonts** can significantly slow down load times.

Use **Google's WebFont Loader** for better control.

## 04 User Experience Layer

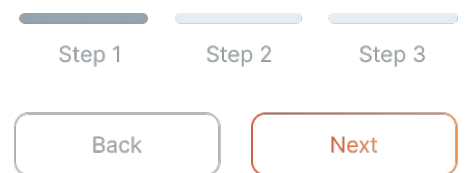
### Intuitiveness

- Users can accomplish key tasks without instruction
- Navigation structure is logical and easy to understand
- Important features are easily discoverable



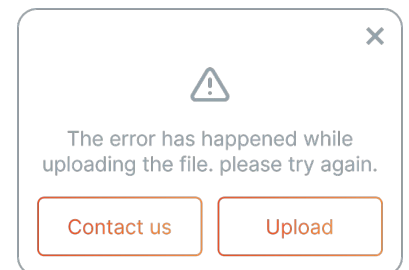
### Efficiency

- Common tasks can be completed in minimal steps
- Keyboard shortcuts are available for power users
- Auto-save features are implemented where appropriate



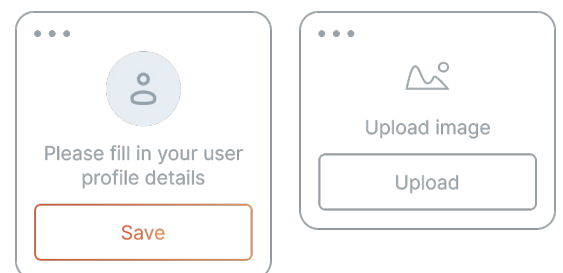
### Error Handling

- Error messages are clear and helpful
- Users can easily recover from errors
- Confirmation is required for irreversible actions



### Content and Readability

- Content is concise and scannable
- Headings and subheadings are used effectively
- Technical jargon is minimized or explained



#### Cognitive load hack:

Use tools like Crazy Egg to identify where users pause or abandon your site.

#### Error messages

**Frame error messages positively.** 'Please enter a valid email' is better than 'Invalid email entered'.

#### Squint test

Use the **'squint test'** — if you squint at your page, the most important elements should still stand out.

## 05 Accessibility Layer

### Screen Reader Compatibility

- All content is accessible via screen readers
- Images have appropriate alt text
- ARIA labels are used where necessary

A form with a label 'Name' and an input field containing the text 'Enter name'.

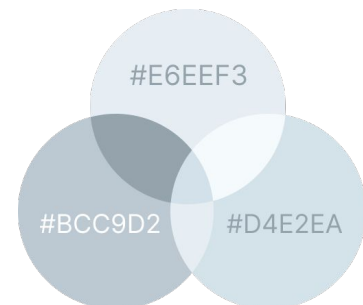
### Keyboard Navigation

- All functionality is accessible via keyboard
- Focus indicators are clearly visible
- Logical tab order is maintained



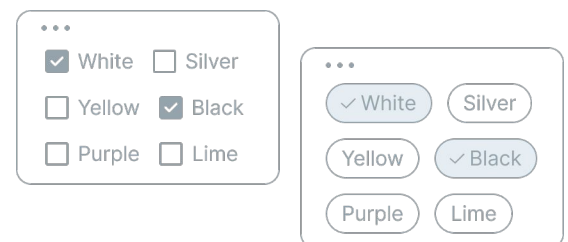
### Color and Contrast

- Color is not the sole method of conveying information
- Text has sufficient contrast with background colors
- Interface is usable in high contrast mode



### Timing and Controls

- Users can control time-sensitive content changes
- Animations can be paused or disabled
- No elements flash more than three times per second



The 'axe' Chrome extension provides **instant accessibility feedback** as you develop.



**Accessibility:** from 'nice-to-have' to legal necessity.  
**Pro tip:** Start with keyboard navigation — it's a quick win for accessibility.

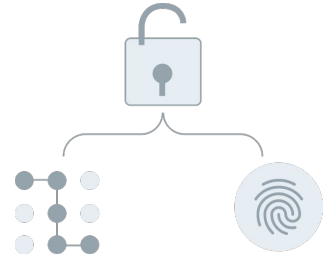


**Poor contrast** can reduce readability by up to 30%.  
Use tools like **WebAIM's Contrast Checker** to ensure perceive your content easier.

# Additional Considerations

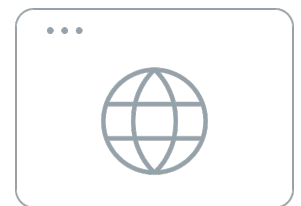
## Security

- All forms are protected against CSRF attacks
- Sensitive data is transmitted securely (HTTPS)
- User permissions are correctly implemented and enforced



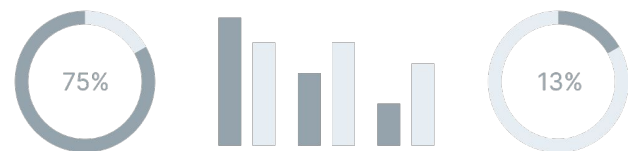
## Internationalization

- Application supports multiple languages (if applicable)
- Date, time, and number formats adjust to locale
- Text expands/contracts appropriately for different languages



## Performance Metrics

- Track and analyze user engagement metrics
- Monitor conversion rates for key user flows
- Regularly review and address user feedback



**Remember:** This checklist is a starting point. Tailor it to your specific product and user needs for best results.

# Common UI/UX Testing Challenges and Solutions

## Time Constraints

### Challenge

Racing against deadlines, starting testing too late.



### Solution

Implement continuous testing with Jenkins or GitLab CI in your CI/CD pipeline.

## Test Environment Setup

### Challenge

Maintaining real-world environments for multiple devices.



### Solution

Use cloud-based testing platforms like BrowserStack or Sauce Labs.

## Dynamic Content Issues

### Challenge

Moving elements and unpredictable content loading breaking tests.



### Solution

Use resilient locators (e.g., data-testid attributes) and tools like Cypress or Selenium WebDriver with explicit waits.

## Cross-Browser Inconsistencies

### Challenge

UI looks different across browsers.



### Solution

Utilize Chrome's device emulation, Responsinator, and cross-browser testing services.

## Performance Under Load

### Challenge

UI slows down with increased user activity.



### Solution

Automate performance tests with Lighthouse or WebPageTest. Simulate load using JMeter or Gatling.

## Visual Regression

### Challenge

Unnoticed visual changes between builds.



### Solution

Implement visual regression tools like Applitools or Percy for automated screenshot comparisons.



## Accessibility Oversights

### Challenge

Vague standards leading to missed accessibility issues.



### Solution

Integrate axe-core or WAVE into your workflow. Use screen readers like NVDA or VoiceOver for manual checks.

## Uncertain Usability

### Challenge

Difficulty predicting real user reactions.



### Solution

Gather user feedback with UserTesting or Hotjar. Use heatmaps and session recordings for deeper insights.

## UI Test Automation Complexity

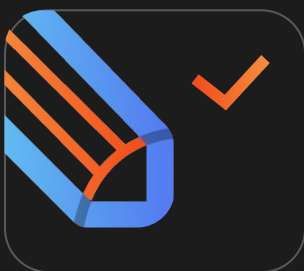
### Challenge

Time-consuming automation that misses key issues.



### Solution

Adopt a hybrid approach. Use Selenium for the web and Appium for mobile. Automate repetitive tasks, test complex flows manually.



## Looking for custom actionable UI/UX test plan?

Contact us for free consultation!

[Contact Us](#)

Testfort is a QA and software development company with **23+ years of experience in the market**. Our team doesn't just write code or run tests — we think like product owners. We offer flexible engagement models because we know one size doesn't fit all. Our team is focused on **creating impact-driven solutions with your end goal in mind**. We're not here to just tick boxes; we're here to make your product succeed.